

User Manual



Model: WKY-L60



Wecan Technology and Lighting Co., Ltd

www.wecanlight.com

I . Technical reference

Voltage: AC 110-240v, 50/60Hz

Power consumption: 180w

Lamp: Luxeon 60w x 1PCS LED

Channel: 15 CH

Control: DMX, Master slave mode, auto mode, sound mode

Movement range: Pan: 540°/ Tilt: 270°

Carton size: 320x300x395mm

G.W.: 9.5kg

Display: LCD screen

Language: Chinese & English operation

Performance traits

This lighting fixture are 60 watt led moving head spot light, which has a piece of 60w led lamp as source, 8 motors, 2 gobo wheels, 1 color wheel, 1 prism wheel. It can be made many gobo combinations based on its functions.

Advantages

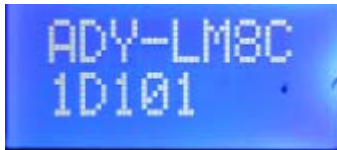
1. More silent.
2. More stable.

II Method of application

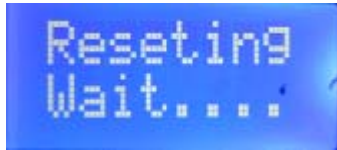
When power on, fixture will be entered into reset status that can't be controlled. As the pictures show, the interface of Product Information, Soft Version, Reset wait will successively show on the display screen. When fixture reset by itself, please to avoid external force to interrupts the fixture, otherwise will lead to fixture reset error.



Picture 3 (Product information)

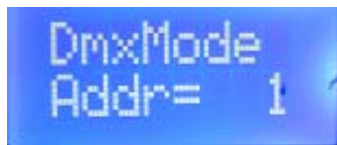


Picture 4 (Soft version)



Picture 5 (Reseting wait)

When fixture reset finished, it will enter into interface of Run mode, which is used for choose control's mode and set DMX address. As the picture 6 shows, that means the fixtures is controlled by DMX mode, DMX address code is 001.



Picture 6 (Running operation)

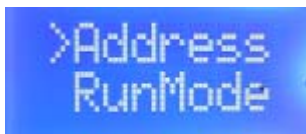
Setting interface

When the setting mode show on display screen, press “enter” enter into “setting mode” interface to set relevant parameters.

As picture 7 shows, “>” indicates that is first level menu.

As picture 8 shows, “*” indicates that is second level menu

As picture 9 shows, “=” indicates that is parameters adjustment. When cursor is flashing, the parameters are not saved.



Picture 7 (First level menu)



Picture 8 (Submenu)



Picture 9 (Parameter adjustment)

Menu

Main menu	Parameter adjustment	Submenu	Parameter adjustment
Address	(=1-512)		
Run Mode	=DMX mode		
	=Auto1		
	=Auto2		
	=Sound		
Reverse Set		Pan Reverse	= YES = NO
		Tilt Reverse	= YES = NO
		Pan	= 540° = 360° = 180°
			Tilt
Channel	= 15CH		
Reset	= YES		
	= NO		
Reload	= YES		
	= NO		

Form 1

Menu description

Address: DMX address setting. DMX address can be set from 1-512, press "enter" to save the address.

RunMode: there are 4 kind of operation mode for user to choose:

"= DMX" indicates that the fixture can be controlled by DMX signal.

"= AUTO1" indicates that the fixture was operated by built-in auto program 1.

"= AUTO2" indicates that the fixture was operated by built-in auto program 2.

"= SOUND" indicates that the fixture was operated by sound.

RevSet: Motor reversed setting. The motors of Pan and Tilt can be rotated on another direction.

RevSet Submenu:

PanRev: Motor of Pan reversed. =YES / =NO

TiltRev: Motor of Tilt reversed. =YES / =NO

Degree: Motor of movement scope setting.

Degree submenu:

PanRev: The largest movement scope on motor of Pan, the largest degree can be set as 540° , 360° , 180°

TiltRev: The largest movement scope on motor of Tilt, the largest degree can be set as 270° , 180° , 90°

Degree: the quantity of channel. There are 15 channels in the fixture.

Reset: Motors reset. When choose "= YES", all motors start reset, any operation will be invalidated.

Reload: Factory default.

Channel list

Channel	Value	Function	Remark
CH1	0-255	Pan	Pan movement by 540°
CH2	0-255	Pan fine	Fine control of pan movement

CH3	0-255	Tilt	Tilt movement by 270°
CH4	0-255	Tilt fine	Tilt control of pan movement
CH5	0-255	Pan / Tilt speed	Pan/Tilt speed from fast to slow
CH6	0-8	Lamp off	Lamp on/off, strobe speed
	9-16	No strobe	
	17-239	Strobe speed	
	240-255	No strobe	
CH7	0-7	Blackout	0-100% linear dimming
	8-255	Dimmer	
CH8	0-15	Color 1	Color wheel
	16-31	Color 2	
	32-47	Color 3	
	48-63	Color 4	
	64-79	Color 5	
	80-95	Color 6	
	96-111	Color 7	
	112-127	Color 8	
	128-191	Color rotation	
	192-255	Color rotation	
CH9	0-6	No effects	Gobo wheel 1
	7-13	Gobo 1	
	14-20	Gobo 2	
	21-27	Gobo 3	
	28-34	Gobo 4	
	35-41	Gobo 5	
	42-48	Gobo 6	
	49-55	Gobo 7	
	56-62	Gobo 8	
	63-69	Gobo 8	
70-76	Gobo 7		

	77-83	Gobo 6	
	84-90	Gobo 5	
	91-97	Gobo 4	
	98-104	Gobo 3	
	105-111	Gobo 2	
	112-118	Gobo 1	
	119-127	No effects	
	128-191	Gobo wheel rotation	
	192-255	Gobo wheel rotation	
CH10	0-18	No effects	Gobo wheel 2
	19-37	Gobo 1	
	38-56	Gobo 2	
	57-75	Gobo 3	
	76-94	Gobo 4	
	95-113	Gobo 5	
	114-127	Gobo 6	
	128-191	Gobo wheel rotation	
	192-255	Gobo wheel rotation	
CH11	0-9	No effects	Rotating gobo
	10-116	Rotating gobo	
	117-244	Rotating gobo	
	245-255	Rotating gobo by both direction	
CH12	0-255	Focus	Focus
CH13	0-15	No effects	Auto mode
	16-255	Motors of Pan & Tilt running automatically	

CH14	0-15	No effects	Prism wheel
	16-239	Prism speed	
	240-255	Prism speed	
CH15	0-249	No effects	Reset
	250-255	Reset	

Form 2

III. Attention:

Fixture reset failure.

1. External force. When fixture into "reset" status, external force can be disturbed fixture reset, even reset failure.
2. Code wheel module broken.

Fixture was out of control by DMX mode.

1. When the value of CH13 is over 16, fixture will be entered into automatically running mode, the motors of Pan and Tilt are out of control by DMX signal.
2. DMX cable broken.